



Sperry Charleston Race Week

April 14 -17, 2016

NOTICE OF RACE

The Organizing authority of Sperry Charleston Race Week is the Charleston Ocean Racing Association (CORA).

1 RULES

- 1.1 The regatta will be governed by the rules as defined in the The Racing Rules of Sailing (RRS), The ORR, and the Sperry Charleston Race Week PHRF procedures.
- 1.2 The protest committee may impose suitable penalties, other than disqualification, for violations of the Class Rules, or other non Part 2 rules. This changes RRS64.1.
- 1.3 If there is a conflict between languages, the English text will take precedence.
- 1.4 The International J/70 Class Event Rules Part III (sections 1.1 and 1.3 will apply)
- 1.5 The International Audi Melges 20 Class Event Rules Part III (Section 1) will apply, except 1.5.
- 1.6 The following rules will be changed in accordance with rule 86.1 (b):
- 1.6.1 Part 5 Section B of The Racing Rules of Sailing as well as rule 44.1 will be changed to permit protest arbitration for Circles 1,2,3,4, and 5.
- 1.6.2 US Sailing Prescriptions to RRS 60, 63.2 and 63.4 will not apply.
- 1.6.3 RRS G3 will apply.
- 1.6.4 Pursuit Class - The Scoring Penalty, rule 44.3 will apply. The penalty will be 20%.
- 1.7 The Equipment Rules of Sailing will apply.
- 1.8 As per RRS 86.1 (b) the sailing instructions will change J/111 Class Rule C.3.3 regarding crew weight, which will be waived. In addition, the maximum number of crew shall be eight (8) with no weight restriction.

2 ADVERTISING

- 2.1 Advertising shall conform to the current ISAF Regulation 20 and in accordance with each boat's Class Rules.
- 2.2 Boats maybe required to display identification numbers and sponsor's advertising for the duration of the event in accordance with ISAF Regulation 20. These items will be supplied free of charge by the Organizing Authority (OA) at registration.
- 2.3 Boats not bearing the event bow sticker on both sides are subject to protest by the race committee only. The protest committee may impose a penalty as it deems appropriate. This changes rule 60.1(a).
- 2.4 Competitors are requested to respect the brand exclusivity of our Official Sponsors; their participation enhances the event for all competitors.

3 ELIGIBILITY AND ENTRY

- 3.1 Sperry Charleston Race Week is open to one-design keelboats between 19-80 feet LOA, ORR, and PHRF monohull boats that are 24-80 feet LOA, and multi-hulls 24-70 feet LOA between hull perpendiculars. PHRF entries sailing on the offshore shore circles shall have a spinnaker TOD rating of 192 or less and entries in the non spinnaker class shall have spinnaker TOD rating above 75.
- 3.2 The entry deadline is 17:00 April 8th 2016. Entries received after 17:00 April 8th 2016 will be considered on a case-by-case basis at the discretion of the Organizing Authority.

Registration will be available online from the event website. A completed online entry, waiver form and the entry fee shall be received by December 31st, 2015 to receive a \$50.00 early discount. Entry acknowledgement will be sent to valid entrants shortly after early entry receipt. All registrations shall be complete and are final.

- 3.3 PHRF the Sperry Charleston Race Week (SCRW) PHRF Consortium, will assign PHRF ratings for this event. The procedures to be followed in order to obtain an event specific rating are described in the SCRW PHRF procedures, which can be found on the event website.
- 3.4 ORR, and Enhanced PHRF will be offered if sufficient entries are received and satisfactory classes can be established. Competitors wishing to race under these ratings shall submit a valid rating certificate with completed entry form. Rating applications for US-flagged boats may be obtained through US Sailing (410-663-0800) or offshore@ussailing.org. ORR entrants are also required to submit a completed PHRF application.
- 3.5 One-Design classes on Circles 1 and 3 will be provided when there are twelve (12) or more entries for a class. Smaller classes may be combined to consolidate starting sequences. The maximum number of entries for single class start is limited to the first 60 (sixty) completed entries (to include all fees) accepted on a time priority basis ("first-come, first served basis"). Completed entries received in excess of the sixty-boat limit will be recorded on a waiting list. If the number of boats entered fall below the sixty-boat limit prior to the entry deadline, entry will be offered to boats on the waiting list in time priority order. One-Design classes on Circles 4 and 5 will require five (5) or more entries.
- 3.5.1 One-Design class (J/70) on Circle 2. The maximum number of entries is limited to the first 100 (100) completed entries (to include all fees) accepted on a time priority basis ("first come, first served basis"). Completed entries received in excess of the one hundred-boat limit will be recorded on a waiting list. If the number of boats entered falls below the one hundred-boat limit prior to the entry deadline, entry will be offered to boats on the waiting list in time priority order. If more than 60 boats are registered, the fleet will be divided to accommodate a rotation as described in the sailing instructions with two separate starts on the same race circle.
- 3.6 Pursuit Classes. The classes' maybe spinnaker, non-spinnaker or combination depending on entrant type and number. Start times will determined by PHRF TOD.
- 3.7 Multi-hull Classes. A multi-hull class using PHRF or Class rules will be provided if there is sufficient interest. A minimum of five boats is needed to provide a start on one of the offshore circles. Entry to the Pursuit Class will be considered on a case-by-case basis. Minimum length is 24 and maximum length 70 feet measured between hull perpendiculars and must be suitable for offshore sailing.

4 CREW LIMITS

- 4.1 All classes shall sail with same number of crew in all races. Any request for changes in the number of crew must be submitted to the Race Director in writing by 07:00 the day of the race in which the change is to take place. A request form will be available on the official notice board, and there will be an envelope to the place the form in. A reply will be posted.
- 4.2 For all PHRF entries, boats will be rated with crew limits described in the SCRW PHRF procedures.

5 OTHER RULES & REQUIREMENTS

- 5.1 All boats shall carry an operating VHF.
- 5.2 All boats shall be sailed by at least three persons on Circles 1 through 5 and two persons for Course 6 (Pursuit Class).
- 5.3 At all times, boats shall monitor and keep clear of commercial traffic. Boats that hinder commercial traffic to the point of five horns shall be subject to protest by the race committee.

6 FEES

- 6.1 The completed entry application shall be accompanied by and entry fee. Registrations are not complete and applications will not be accepted without entry fees. The entry fees are based on the LOA and are as follows:
 Tier 1 (19'-24') = \$450.00
 Tier 2 (25'-34') = \$475.00
 Tier 3 (35'-44') = \$525.00
 Tier 4 (45'-80') = \$550.00
 A boats LOA is to be rounded to the lower whole number (i.e. 29.01' =29' and 29.99' = 29') for the purpose of determining entry fees.
- 6.2 Additional Fees
 - 6.2.1 Early Discount. Completed entries received by December 31st 2015 are eligible for a \$50.00 discount.
 - 6.2.2 Cancellation Fee: All registrations shall be complete and final. Cancellations prior to March 14, 2016 will be handled on a case-by-case basis. As of March 14th, 2016, registrations are non-refundable.
 - 6.2.3 Late fee: Entries received after April 1st 2016 will be assessed a \$100.00 late entry fee. The entry deadline is 24:00 EST April 8th, 2016. Entries received after 24:00 EST April 8th 2016 will be considered on a case-by-case basis at the discretion of the Organizing Authority.
 - 6.2.4 Non- US Sailing members shall add \$25.00 to the entry fee. Members shall include the membership number for proof of membership.
- 6.3 Shoreside Passes: The Shoreside Event Pass provides entry to the Race Village April 14th – 17th, 2016 and includes cocktails on the beach Thursday – Saturday, a Friday buffet, the Sunday afternoon beer and chili cookout plus trophy presentations, prizes, sponsor demonstrations, music and more. Saturday no meal is served so that you may venture out to one of the many Charleston and Mount Pleasant area restaurants for dinner. A Race Week Shoreside Event Pass will be required for each person’s participation in any of the event’s shoreside activities. Two Shoreside Event Passes will be provided with your boat’s registration fee. Additional Shoreside Event Passes may be per purchased online until March 30th, 2016 for \$65.00 or \$85.00 on-site thereafter. Daily and children passes will be available on-site for visitors and those wishing to only attend one evening.

7 PRELIMINARY SCHEDULE OF EVENTS

- April 14th 2016
 - 1200-1700 Registration Packet Pick Up (Pavilion)
 - 1700-1800 Skippers Meeting (Pavilion)
 - 1800-2100 Opening Beach Party, Tacos, Gosling’s Rum, Beer Bar , Music
- April 15th 2016
 - 0930 Pursuit Class Warning Signal
 - 1030 Offshore Circles 4 & 5 first warning signal
 - 1100 Inshore Circles 1, 2 and 3 first warning signal.
 - 1800-2100 Daily Awards, Buffet, Gosling’s Rum, beer, and Music
- April 16th 2016
 - 0930 Pursuit Class Warning Signal
 - 1030 Offshore Circles 4 & 5 first warning signal
 - 1100 Inshore Circles 1, 2 and 3 first warning signal.
 - 1800-2100 Daily Awards, Gosling’s Rum, beer, and Music
- April 17th 2016
 - 0930 Pursuit Class Warning Signal
 - 1030 Offshore Circles 4 & 5 first warning signal
 - 1100 Inshore Circles 1, 2 and 3 first warning signal.
 - 1400-1800 Beach Party with,. Chili, beer, and Music
 - 1600-1800 Awards Ceremony

8 SAILING INSTRUCTIONS

Sailing Instructions will be available March 1st, 2016 on the Sperry Charleston Race Week website and at Race Headquarters beginning on Thursday April 14, 2016.

9 VENUE AND THE COURSES

The regatta site for Sperry Charleston Race Week will be the Charleston Harbor and the Atlantic Ocean.

- 9.1 Attachment A shows the approximate location of the racing areas.
- 9.1.1 Inshore Race Courses – Circles 1, 2, & 3
- 9.1.2 Ocean Race Courses – Circles 4 & 5
- 9.1.3 The Pursuit Classes will sail course area 6 and shall comply with ISAF Offshore Special Regulations Appendix J Category 5 requirements. Plan to sail a longer single race per day around government buoys both inshore and offshore.
- 9.2 Courses for each race area circle will be defined in the Sailing Instructions.
- 9.2.1 Races on Circles 1, 2, and 3 will be windward/leeward set by the Race Committee.
- 9.2.2 Races on Circles 4 and 5 maybe windward/leeward as set by the Race Committee. In addition, the final race of the day may have windward/leeward legs followed by a distance leg that will finish inshore near the CHR&M.
- 9.2.3 Races on Course area 6 (Pursuit Class) will be point to point type racing.
- 9.3 The ORR, PHRF, Enhanced PHRF and selected one design classes will sail the offshore circles (Circle 4 or 5) and shall comply with ISAF Offshore Special Regulations Appendix J Category 5 requirements.
- 9.4 The Pursuit Class will sail Course 6 and shall comply with ISAF Offshore Regulations Appendix J Category 5 requirements. Plan to sail a longer single race per day around government buoys both inshore and offshore.

10 PENALTY SYSTEM

- 10.1 The first two sentences of 44.1 are changed to: A boat may take a One Turn Penalty when it may have broken a rule of Part 2 or rule 31 while racing. However when she may have broken a rule of Part 2 while in the zone around a mark other than a starting mark her penalty shall be a Two-Turns Penalty. Rule 44.3 scoring penalty shall not apply.
- 10.1.1 Unless the course is shortened to finish at the windward mark, penalties within the zone of the windward mark or on the offset leg may be delayed and taken as soon as possible on the downwind leg. This changes rule 44.2.
- 10.1.2 Post Race Penalties. RRS Appendix T, Section B will apply.
- 10.1.3 A boat that has taken a penalty turn(s) in accordance with SI 101 shall complete the Penalty Declaration form available at the scoring desk before the end of the protest time limit.

11 SCORING

- 11.1 A maximum of eight races are scheduled for the offshore circles and a maximum of ten races are scheduled for the inshore circles, one of which shall be completed to constitute a series.
- 11.2 ORR entries may be scored as separate sub class within a PHRF class.
- 11.3 If five or fewer races are completed, the score for each boat will be the sum of the scores for all races sailed; if six or more races are completed one race will be discarded from each boat's score. This changes RRS A2. A minimum of one race per day shall be completed, for daily trophies to be awarded. The PHRF and Enhanced PHRF classes will be scored using time on time. The ORR classes will be scored using the ORR factor and time on time.

12 SUPPORT BOATS

- 12.1 Entries utilizing coach/support boats shall register with the Race Committee at registration and have those vessels marked with an identifying flag.

13 BERTHING – SLIPS – DOCKING

- 13.1 There will be a limited amount of complimentary transient dockage available at the CHR&M for the first 35 boats under 28 feet LOA from Thursday April 15th through Sunday April 17th.
- 13.2 This dockage will be in a side tie configuration with other boats rafted alongside at 2-3 deep and may be at the docks farthest from the hotel. Those qualifying for limited complimentary dock space will be notified of the offer and asked to confirm the intent to accept or reject it. Those registering beyond the first 35 boats under 28 feet LOA and boats requiring individual berths should make separate arrangements with marina for dock space. No individual slips will be permitted with limited complimentary dockage.
- 13.3 For further dockage instructions and information contact the CHR&M Dockmaster at (843) 856-0028 (option 5) or (888) 856-0028 (option 5)
Email: kpoe@charlestonharborresort.com
Website www.charlestonharbormarina.com

14 HAUL-OUT RESTRICTIONS

- 14.1 Boats shall not be hauled out during the regatta except with and according to the terms of prior written permission from the Race Director.

15 RADIO COMMUNICATION

- 15.1 All boats shall carry an operating VHF radio.
- 15.2 Except in an emergency, a boat shall neither make radio transmissions while racing nor receive radio communications not available to all boats. This restriction also applies to mobile phones.

16 PRIZES

- 16.1 PHRF: One daily award in each class for each day of racing. One overall trophy will be awarded in each class for every three boats entered up to a maximum of three trophies per class. The entry that wins the most competitive class will receive the recognition on the Palmetto Cup Perpetual Trophy.
- 16.2 One Design Classes: One daily award in each class for each day of racing. One overall trophy will be awarded in each class for every three boats entered up to a maximum of three trophies per class. Additional Corinthian awards will be made available for the classes recognizing Corinthian teams within their class. The entry that wins the most competitive class will receive the recognition on the Charleston Race Week Cup Perpetual Trophy.
- 16.3 ORR: One daily trophy will be awarded for day of racing. One overall trophy will be awarded for every three boats entered to a maximum of the three trophies.
- 16.4 Jubilee Sportsmanship Perpetual Trophy will be awarded to the participant who has displayed outstanding example of good sportsmanship during Sperry Charleston Race Week. Ballots will be available for all participants.

17 DISCLAIMER OF LIABILITY

- 17.1 Competitors participate in the regatta entirely at their own risk. (See RRS4, Decision to race). The Organizing Authority will not accept any liability for material damage or personal injury or death sustained in conjunction with or prior to, during, or after the regatta.
- 17.2 The safety of a boat and its crew is the sole and inescapable responsibility of the Skipper who shall ensure that the boat is fully sound, thoroughly seaworthy, and manned by an experienced and physically able crew. Neither the establishment of regulations or inspection of a boat in any way limits or reduces the complete and unlimited responsibility of the Skipper.
- 17.3 Charleston Ocean Racing Association, Sponsors of the Sperry Charleston Race Week, their employees and volunteers do not accept responsibility for the loss of life or injury to participants or others, or for the loss or damage to any vessel in any way or from any cause during or relating to this event.

- 17.4 The Skipper shall be responsible for the conduct of his crew. In the event of a serious breach of conduct, the destruction of property or the failure to comply with a reasonable request of any Race Officer or Committee Member, the Skipper will be responsible for all damages and the boat may be subject to protest, which may include disqualification from the regatta.

18 INSURANCE

Each participating boat shall be insured with valid, third party liability insurance with a minimum coverage of \$300,000 USD per event or the equivalent.

19 AMENDMENTS TO THIS NOTICE OF RACE

- 19.1 Any amendments of this notice made prior to April 10, 2016 will be posted on the event's Yacht Scoring website.

20 GENERAL INFORMATION

- 20.1 Periodic updates and latest information on the event will be posted on the Sperry Charleston Race Week website: www.charlestonraceweek.com
- 20.2 Event Race Headquarters will be at the Charleston Harbor Resort and Marina (CHR&M) located at 20 Patriots Point Road, Mount Pleasant, SC 29464. The CHR&M website is www.charlestonharborresort.com. The Race Village will be located at CHR&M. Registration, the Skippers Meeting on Thursday and Awards on Sunday will be in the Race Village. The official notice board will be in the Race Village. In an effort to facilitate communications to the competitors, information related to this event may be posted in other areas, but there is only one official notice board.
- 20.3 Storage, Launching, Retrieving and Setup Pre and post race storage details will be posted on the event website under logistics. Several local yacht clubs and boatyards are available for storage, launching and retrieving. Greater details are available on the event website.
- 20.4 Accommodations
The Charleston Harbor Resort & Marina is providing Sperry Charleston Race Week with special group rates that are available through March 12th, 2016. There is an additional 10% discount for reservations received by December 31st 2015. These rooms sell out fairly quickly and include free parking for resort guests. There will also be a new hotel onsite opening March 1st 2016.
Charleston Harbor Resort & Marina:
Telephone (843) 856-0028
Website www.charlestonharborresort.com
Register Online:
<https://bookings.ihotelier.com/bookings.jsp?groupID=1080074&hotelID=3635>

21 EVENT MANAGEMENT

- 21.1 The organizing authority for Sperry Charleston Race Week 2016 is the Charleston Ocean Racing Association (CORA) Address all correspondence regarding the event to Sperry Charleston Race Week, 4208 Pace Street, Unit C, North Charleston SC 29405, Telephone (843) 628-5900 Fax (843) 278-8671, Email: info@charlestonraceweek.com, Event/Race Director – Randy Draftz
- 21.2 Event Name and Rights
Any commercial or editorial reference to the event must use the official regatta's name Sperry Charleston Race Week. A commercial video must be licensed by Sperry Charleston Race Week. Photographers and videographers must be registered with the event, display the appropriate flag and respect the Race Committee's requests to keep clear of the competitors.

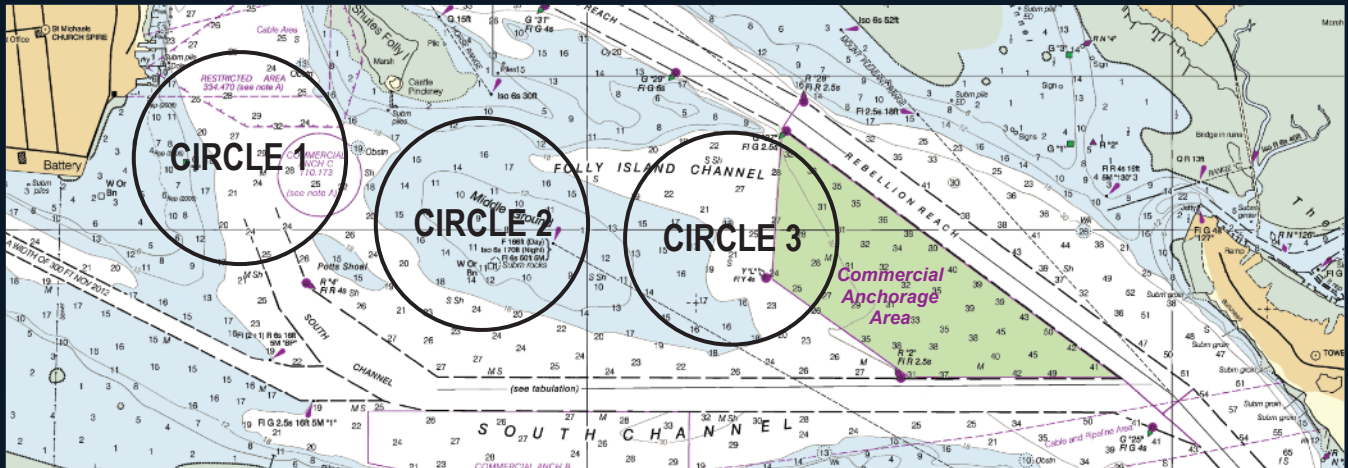
- 21.3 Television and Photographer's Rights Competitors give absolute right and permission for video footage or photographs of themselves or their boat to be published in any media for press purposes and editorial or advertising purposes.
- 21.4 Please make sure to periodically check the event website and make sure to sign up for the event email list. Events and schedules may change. All events listed here are located in the Race Village at the Charleston Harbor Resort & Marina unless otherwise noted. Please make sure each individual planning to attend these festivities has a Shoreside Event Pass.

Attachment A as follows:

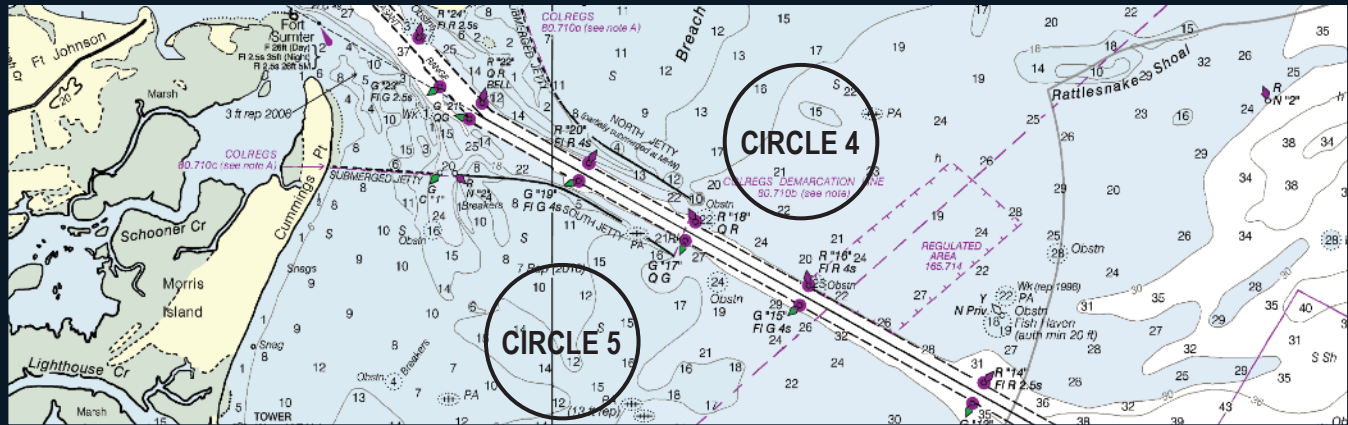
RACE CIRCLES 1, 2, 3, 4 and 5

Pursuit Courses will be available within their sailing instructions.

INSHORE CIRCLE LOCATIONS



OFFSHORE CIRCLE LOCATIONS



Sponsors:

